









PAD 416 / 424 / 230

Dampened toothed mats



Vibroacústica Control y Aislamiento S.L.

Índice

	Information.....	1
	Description and dimensions.....	1
	Phisical analysis	2
	Graph: Static.....	2
	Assembly and versions.....	3
	Applications.....	4



Information

The PAD is the generic name of "double anti-vibration plate" as they are formed from two antivibration mats AD 412 (black), AD 412B (blue) or mixt of both. This makes that are obviously the same viscoelastic plates rubber used for the manufacture of the individual sheets in different grades and proportions.

PADs are used when the requirements of the point load are superior to AD and AD 412 or mouse 412B, or a greater level of effectiveness is required to prevent the passage of the vibratory transmission. As a consequence of these requirements, the PAD model is divided into two categories based on the geometry of its basis toothed Mouse (AD 412 and AD4 12B):

- The PAD 416, 416B and 416Mixt., Series are formed by two damped plates fitted by the toothed faces. The goal is to create a greater load which supports block and turn the discontinued created by the engagement of the teeth, that favours the vibration isolation.
- The PAD PAD 424 and 424B series are characterized by having an opposite position from previous models, because they are assembled by the smooth faces of the anti-vibration plates to hide the gear sides.
- So PAD 424 in both the upper and lower side is jagged but with opposites orientation. The justification is to create a mechanical system in series and therefore achieve a greater vibration isolation with the same capacity as a single plate damped.



PAD 230 and the PAD 230 B series are manufactured as PAD PAD 424 and 424B but with greater height to better accommodate large irregularities of the ground.

PAD 412 B



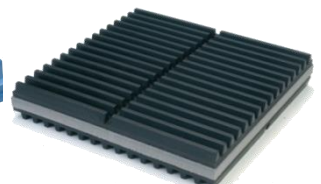
PAD 416



PAD 424



PAD 230



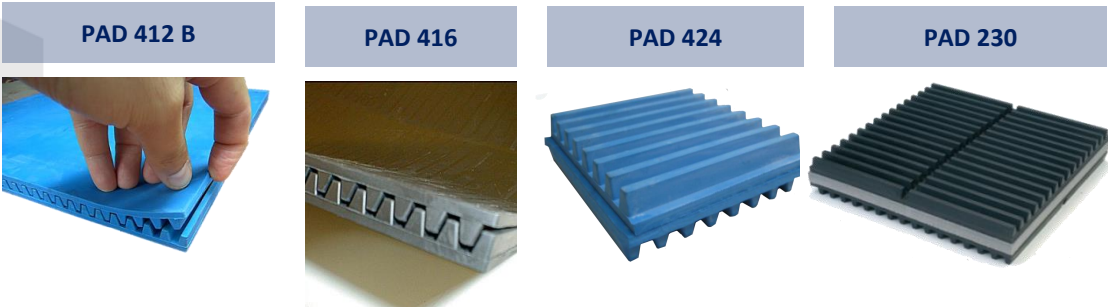


Description and dimensions

Model	Dimensions (mm)			Tooth type
	A	B	C	
AD 412	380	380	12	Trapezoidal
AD 412 B	380	380	24	Trapezoidal
PAD 416	388	388	16	Trapezoidal
PAD 424	388	388	24	Trapezoidal
PAD 230	194	198	33	Trapezoidal
PAD 430	388	388	33	Trapezoidal

Dampened AD 412 mats can be assembled by its toothed face for greater load capacity, called PAD.

** (See sheet pad 416 ft)*





Physical analysis

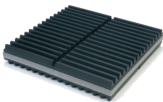
Physical Properties	Value	
Material	Rubber (NR)	
Colour	Satin black	
Hardness [°ShA]	55	5%
Maximum load [daN]	23.000	
Maximum arrow [mm.]	3	
Minimum load [daN]	2500	
Minimum load [mm.]	1	
Optimal load [daN]	6000-16500	

PAD 416



Physical Properties	Value
Material / Colour	Rubber (NR) Blue
Dampening factor	0.03
Hardness [°ShA]	45
Maximum effort [daN/cm²]	1,5
Maximum arrow [mm.]	5.2
Minimum effort [daN/cm²]	0.01
Minimum arrow [mm.]	1
Optimal pressure [daN/cm²]	0.2-1,7

PAD 424



Physical Properties	Value	
Material	Rubber (NR)+EVA	
Colour	Satin black / Grey inside	
Hardness [°ShA]	55	5%
Maximum superficial pressure [daN/cm²]	4.4	
Maximum arrow [mm.]	8	
Minimum superficial pressure [daN/cm²]	0.01	
Minimum arrow [mm.]	0.5	
Optimal superficial pressure [daN/cm²]	0.05 - 3.6	

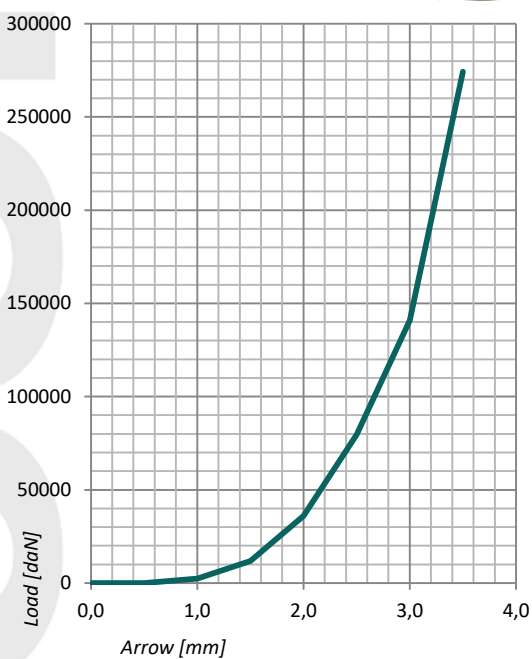
PAD 230



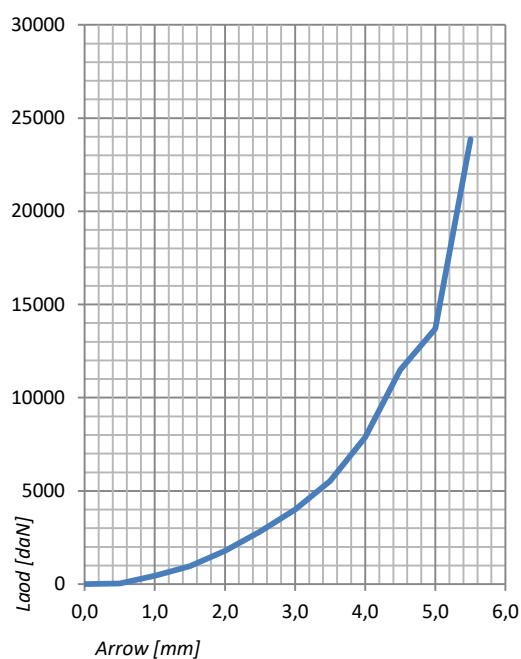


Graph: Static

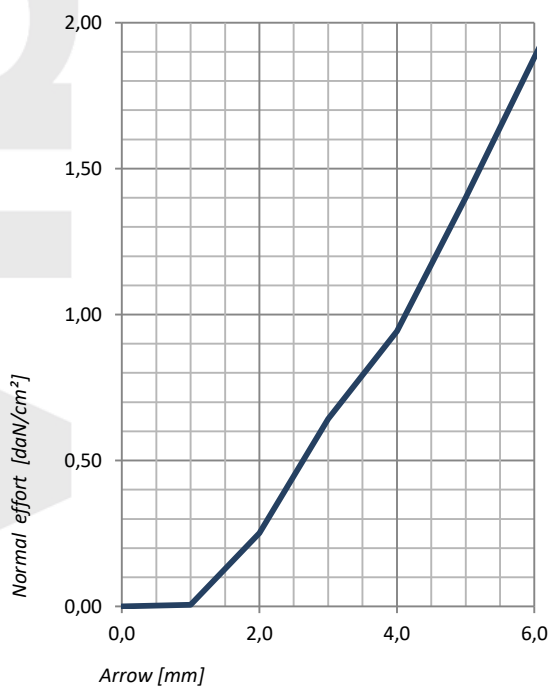
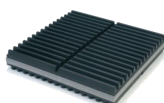
PAD 416



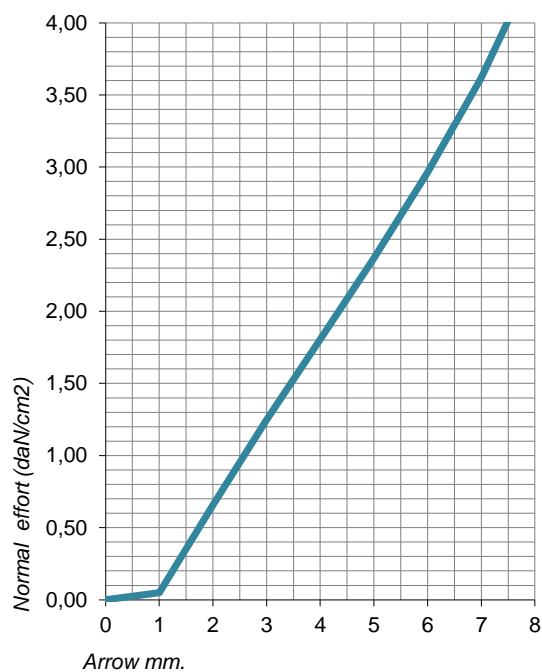
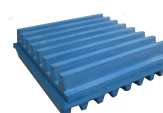
PAD 416 B



PAD 424 B



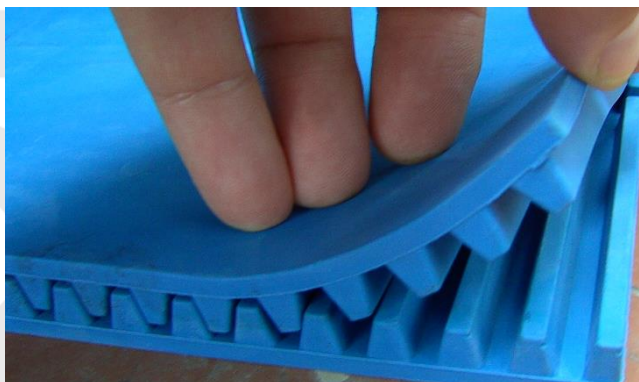
PAD 230



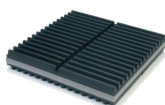


Assembly and versions

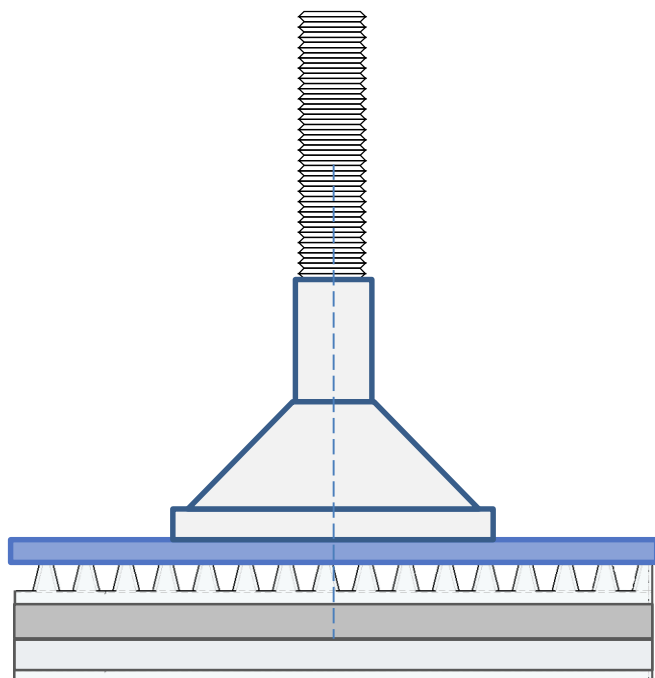
PAD 416



PAD 424



PAD 230



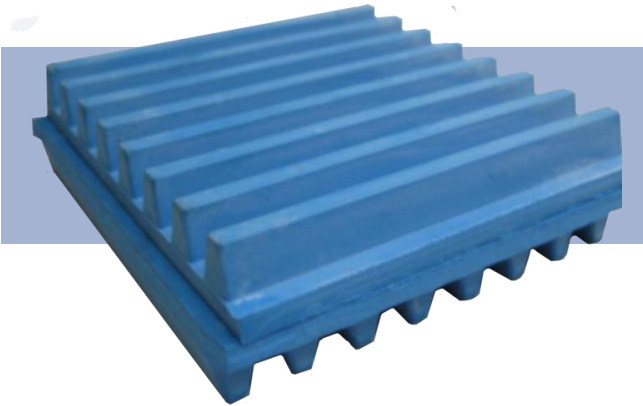
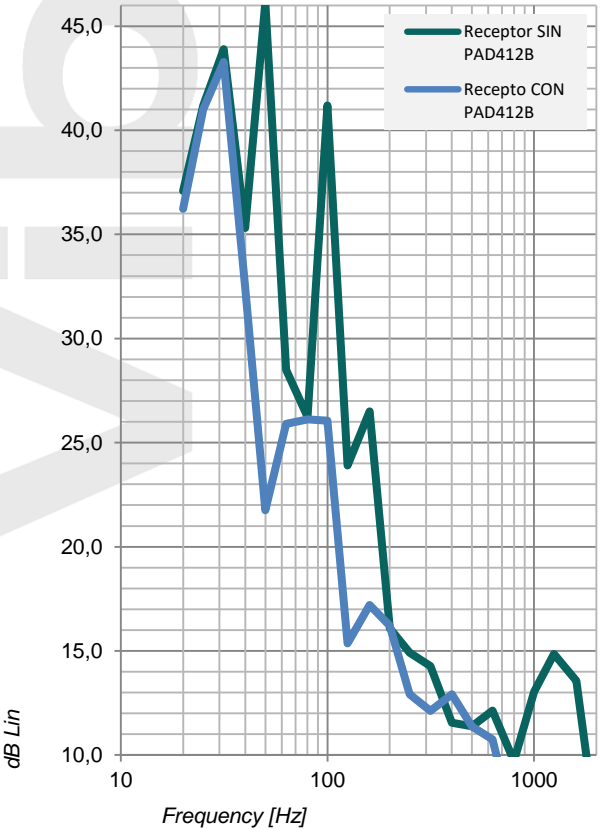
Particular application of PAD 424 B

One case of applying the PAD 424B is illustrated here, is applied in attenuating structural noise induced by the mechanical vibration generated by the pump and air compressor 100 l/min of an aquarium.

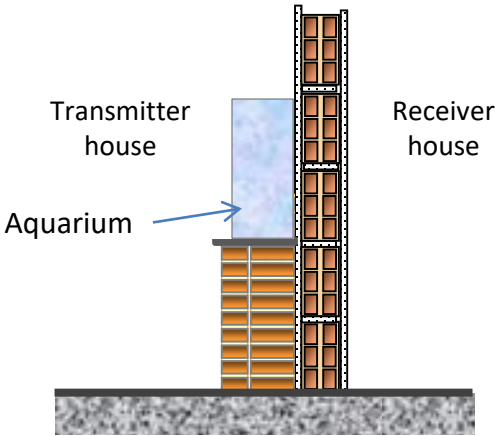
The aquarium capacity was of 360 liters and approximate dimensions of 120x60x50 cm., And was installed in a house (transmitter) and affecting the other bedrooms of the adjoining housing (receiver).

Zone	*Level [dBA]
Transmitter house	46
Receiver house SIN PAD 424 B	26
Receiver house CON PAD 424 B	19

Note *: Levels corrected by background noise



Formed from 2 antivibration plates joined by their smooth and displaced face between both 90°



As can be seen, the most important specific attenuation at frequencies of 50 Hz and 100 Hz. Below 30Hz there is no attenuation.

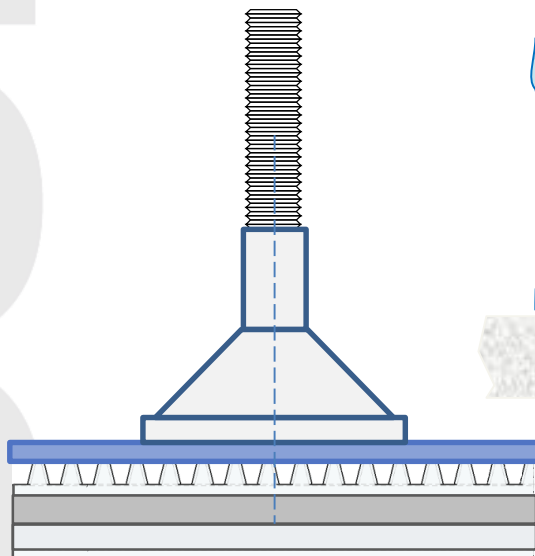
Ref: PE-LEAM 45461115

Prohibited its total or partial reproduction without prior authorization

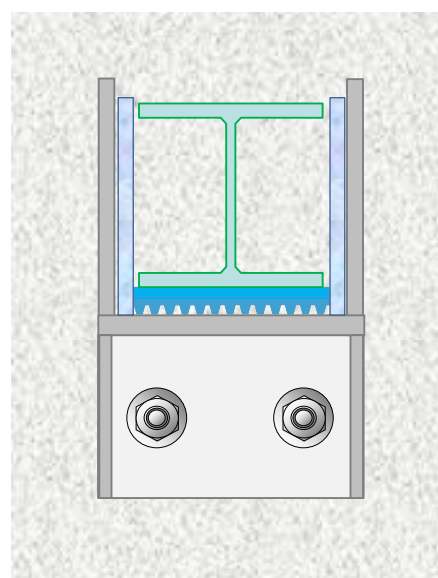
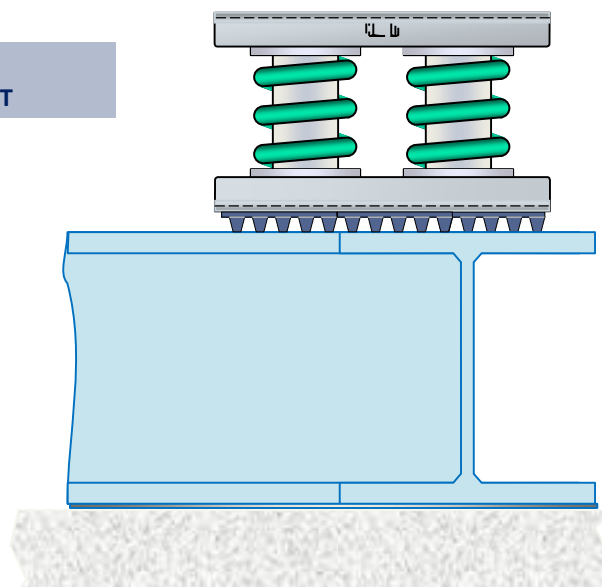
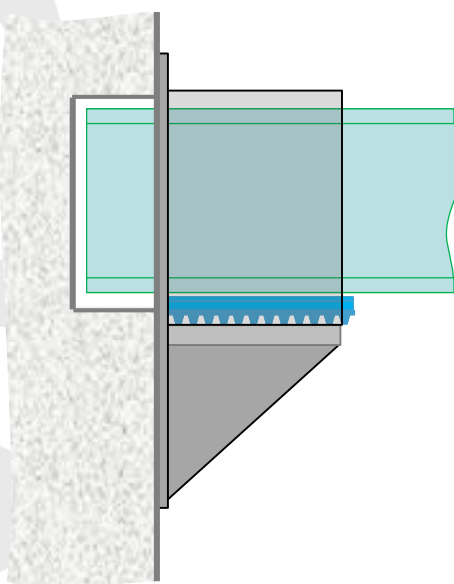


Applications

PAD 424
ELASTIC TECHNICAL FLOOR SUPPORT



PAD 424
ELASTIC TECHNICAL FLOOR SUPPORT





Vibroacústica Control y Aislamiento S.L.

