








# GOM Serie

Rubber elastic suspensions



 **vibcon**<sup>®</sup>  
Vibroacústica Control y Aislamiento S.L.

## Index

	<b>Information.....</b>	<b>1</b>
	<b>Description and dimensions.....</b>	<b>2</b>
	<b>Graphic: Natural frequency.....</b>	<b>3</b>
 	<b>Assembly and application.....</b>	<b>4</b>



## Information

### GOM



• **SUPER GOM** and **GOM** play an uncoupling function because they prevent metal-metal contact in fastening systems or joining surfaces. Being composed by a viscoelastic rubber, favor resistance to the passage of the vibrations (mechanical impedance) because it works apart and isolating the contact between two metal bodies.

### SUPERGOM



- The Metal Gom (**MG y MGT**) are much more insulating than previous models because they avoid transmission of structural noise induced by mechanical vibration.
- They are supplied with two different configurations to meet a wide range of installation options. The **MGT** incorporates a housing that facilitates direct ceiling suspension. **GM** are ideal to insert into fixing angular ears and incorporating standard machine and metal sections used in suspension structures (RACs).

### METAL GOM



### MGT



#### WHEN TO USE

##### Vibcon dampers for suspended

These products designed and manufactured by Vibcon are essential to install any type of machinery or electronic device (not exceeding 150 kg) to prevent vibration transmission to the roof, which consequently generate structural noise. With these dampers an elastic attachment is achieved, and so also the equipments of any building structure are completely separate .

#### WHAT ARE THEY COMPOSED OF?

##### Vibcon dampers for suspended

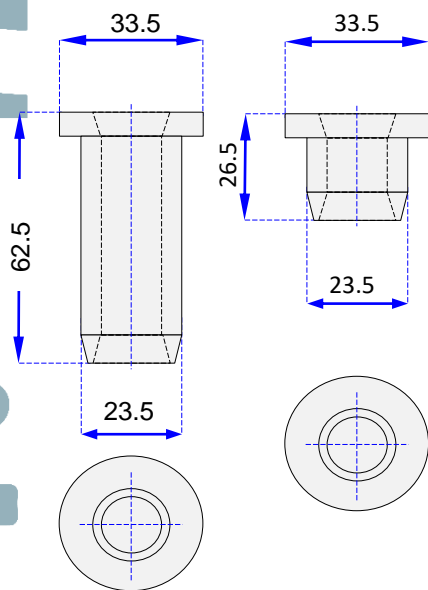
**GOM** are basically manufactured by viscoelastic rubber depending on the environment where they are placed. It is offered in different grades (EPDM, Silicone, etc.). In addition Gom Metal models (**MG** and **MGT**) main element is a spring made from "steel rope standard piano".

All components of these models are interchangeable among them multiplying different mounting configurations and also are environmentally friendly because they do not incorporate tails weldable heat in the rubber and steel joints, because they are highly polluting and it makes very difficult the recycling process.

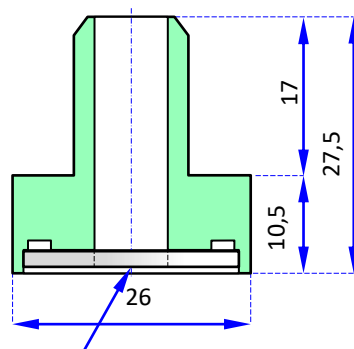
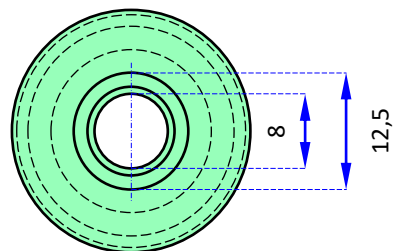


## Descripción y dimensiones

### SUPERGOM

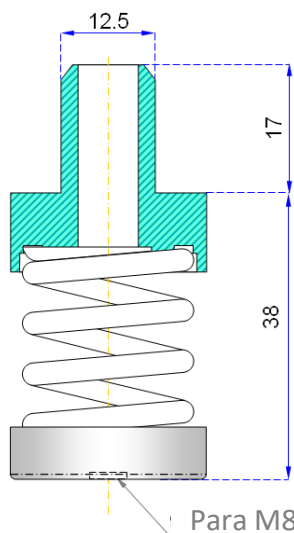
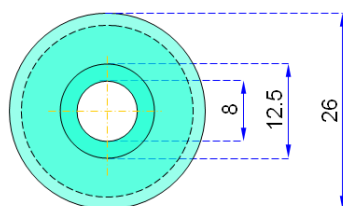


### GOM

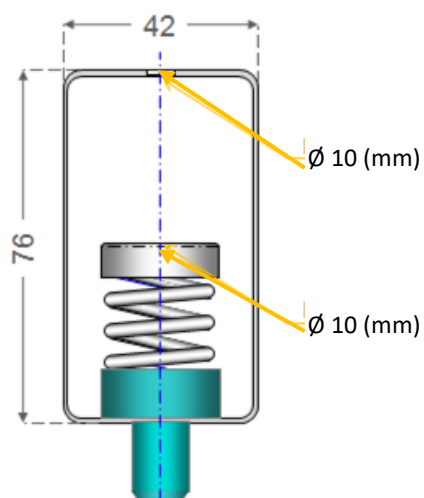


Washer DIN 9021

### METAL GOM



### MGT

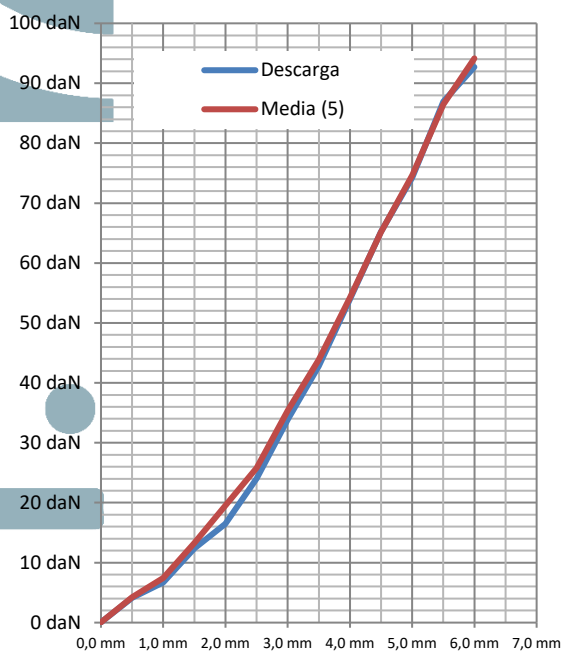


Para M6/M8

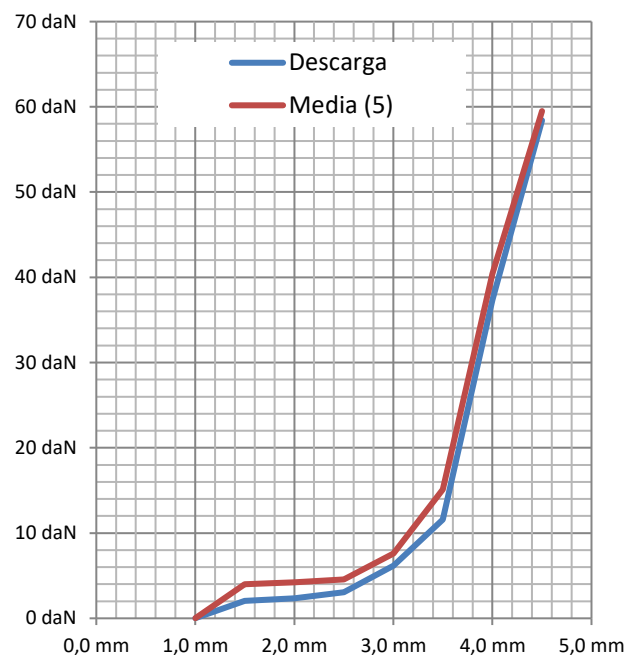


**Graphic: Natural frequency**

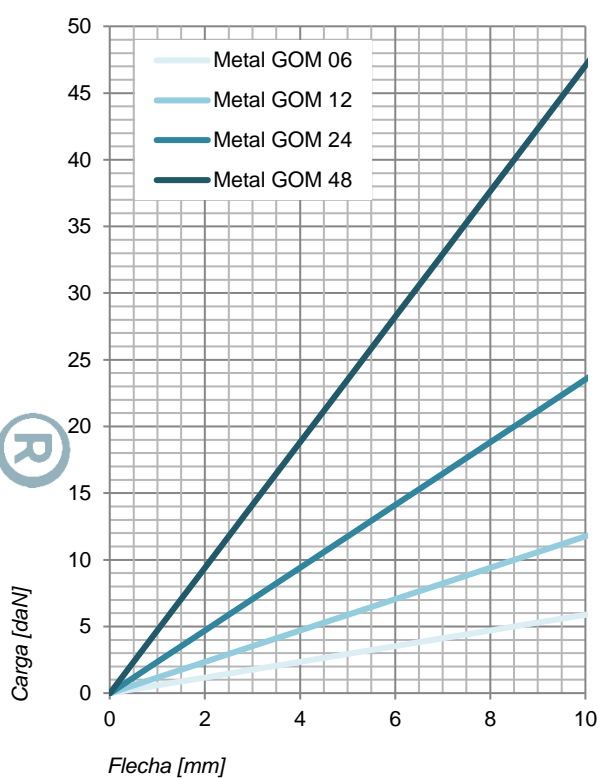
## SUPERGOM



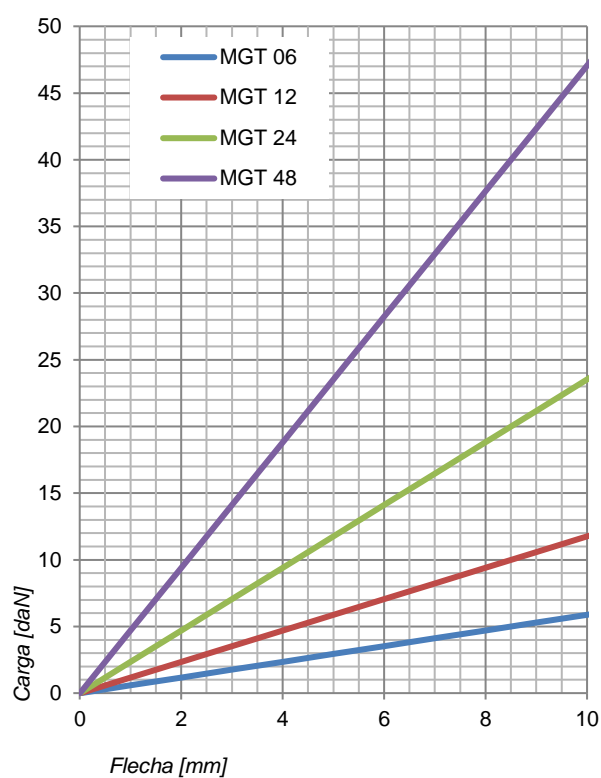
## GOM



## METAL GOM



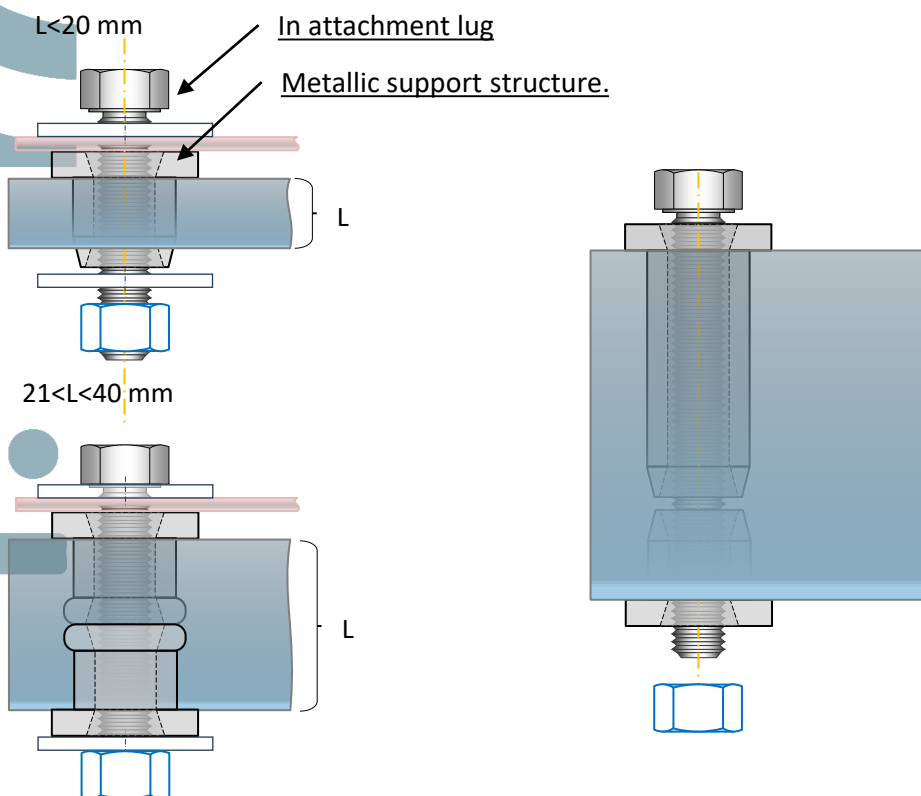
## MGT



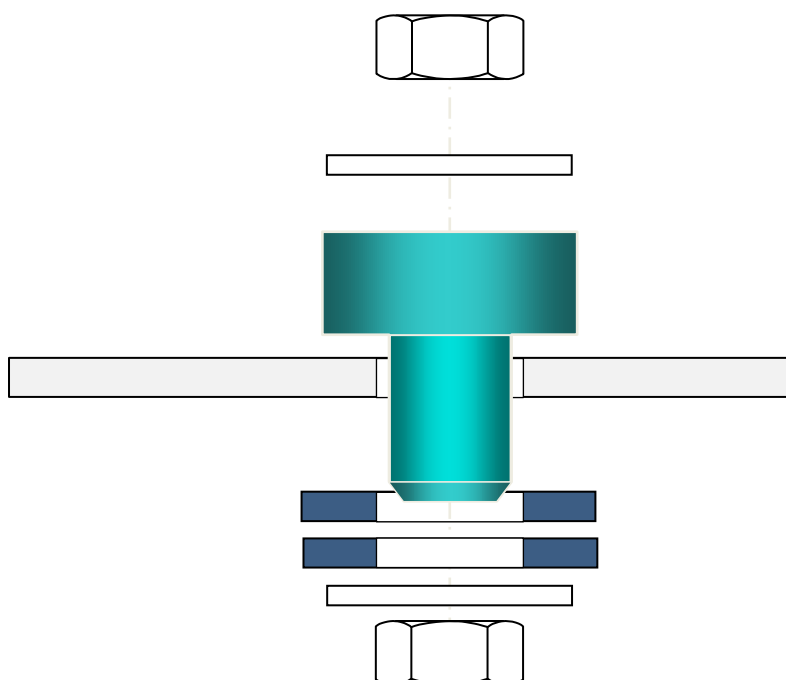


## Assembly and application

### SUPER GOM



### GOM



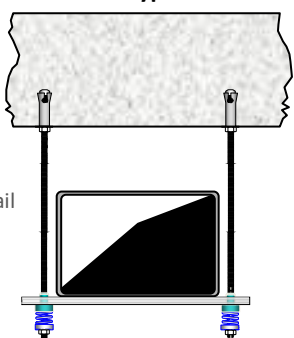


## Montaje y aplicaciones

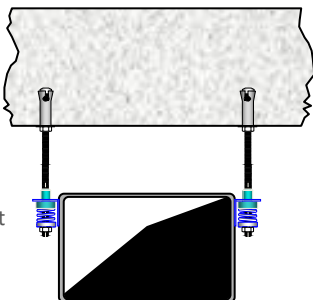
### METAL GOM

#### Assembly types

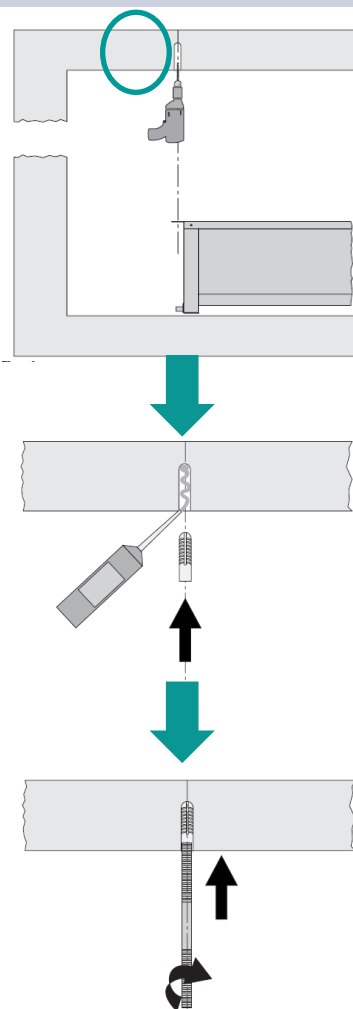
In metal rail



In attachment lug

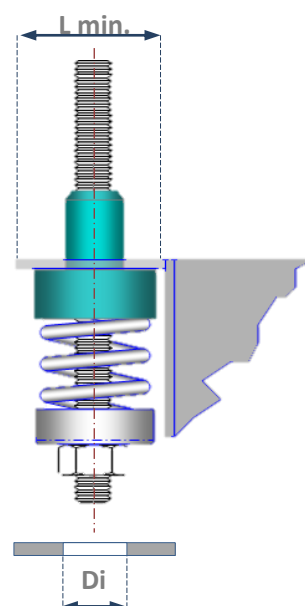
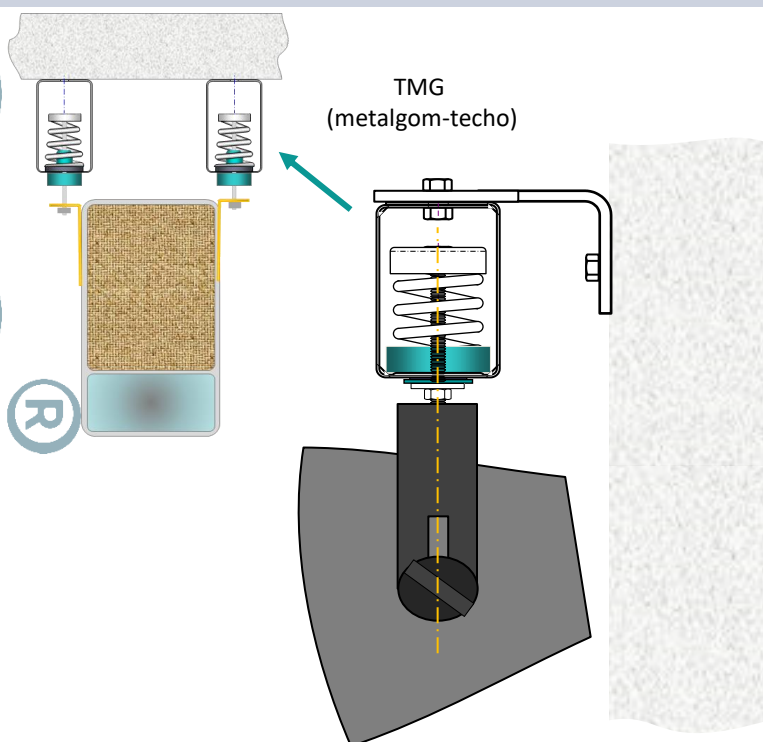


- Make 4/6 holes for suspending the fan coils.
- It is recommended that the supports weight does not exceed 40Kg if a simple anchor is placed.
- For higher loads it is advisable to place chemical plugs.



### MGT

TMG  
(metalgom-techo)



Di: Encaje para orificios de  $\varnothing 10,5$  a  $\varnothing 12,5$  mm





Vibroacústica Control y Aislamiento S.L.