

# SBC

Armored elastic supports

# Index

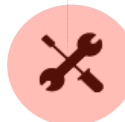
vibcon



**Information**.....1



**Dimensions**..... 1



**Assembly and applications**..... 1



**Physical analysis**.....2

*The information can be modified without previous advise*



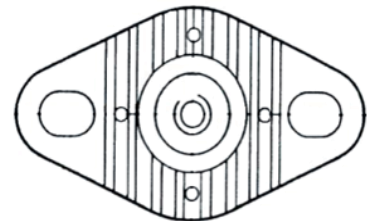
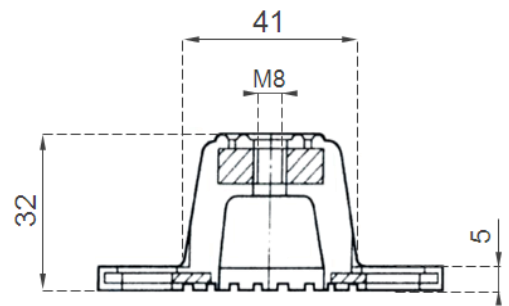
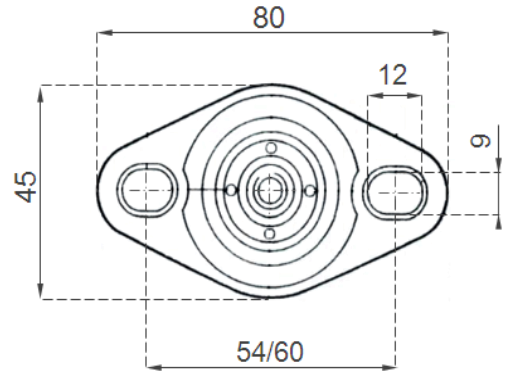
### Information



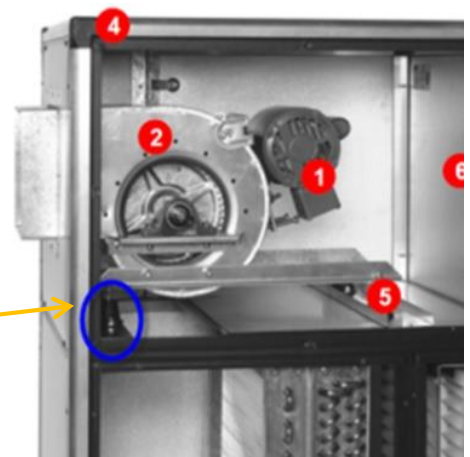
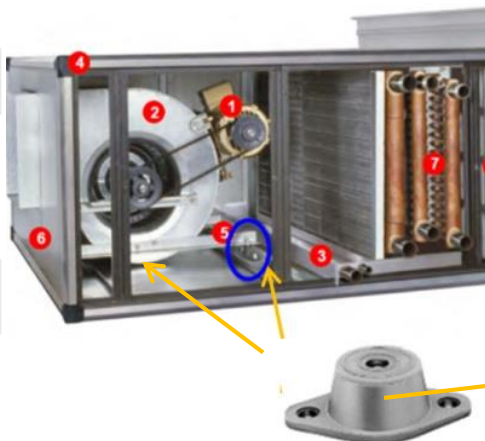
- Small versatile metal rubber supports for assemblies that requires compression stress and shear compression.
- By having the interior hollow, they have greater deflection than metal-rubber silentbloc and consequently a higher degree of vibration isolation is achieved for the same dynamic regime.
- The upper and lower armature are fully rubber coated.



### Dimensions



### Assembly and applications



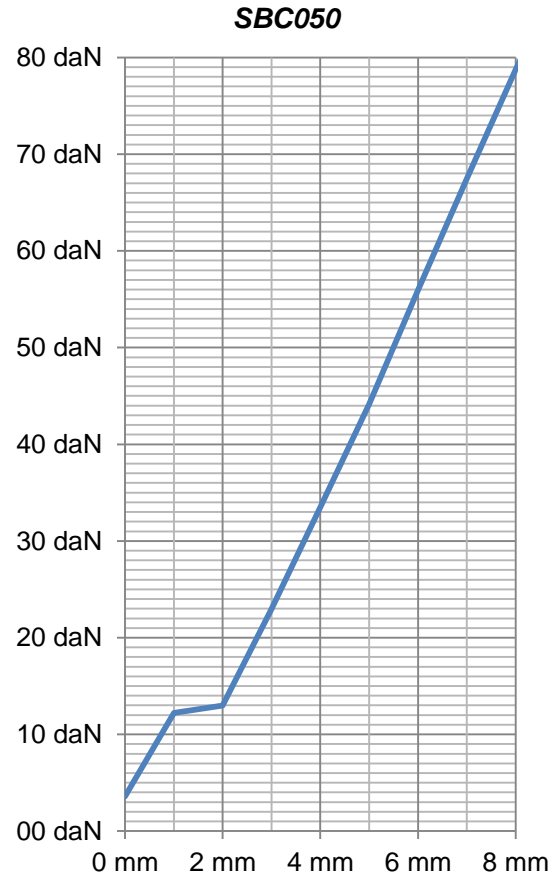
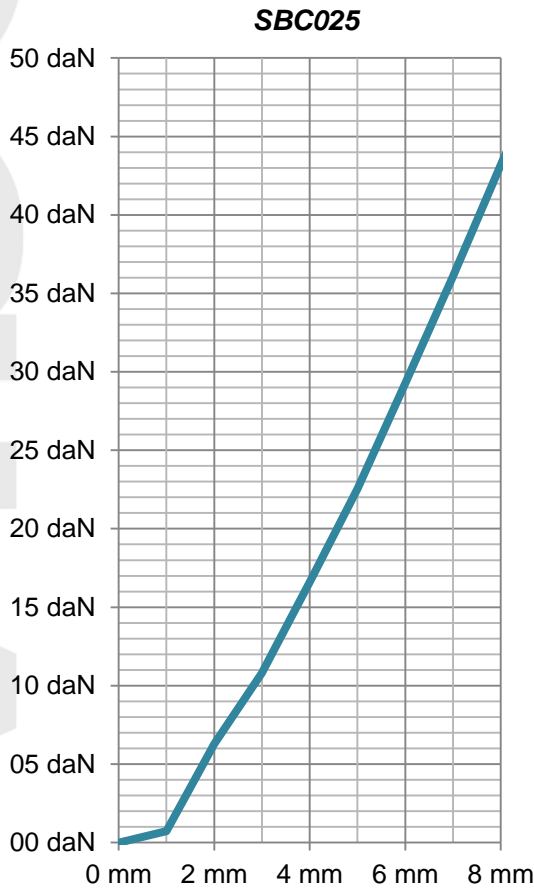


### Análisis físico

Vibcon Model	Maximum load [daN]	Maximum Deflection [mm}	Hardness [°ShA]	Distinctive colour
SBC025	35	7	45	Yellow point
SBC050	65	7	55	Blue point

Admissible overload transiently >120 %

### Load static deflection





Vibroacústica Control y Aislamiento S.L.

---

