

The image shows several square rubber blocks of different colors (blue and grey) and shapes. Some have circular holes, and one has a complex multi-hole design. A dark teal banner is overlaid on the left side of the image, containing the text 'PA' and 'Viscoelastics rubber blocks'.

PA

Viscoelastics rubber blocks

Índice



vibcon®



Introduction1



Rubber qualities1



Dimensions2



Physical Analysis3



Assembly and applications3



Information

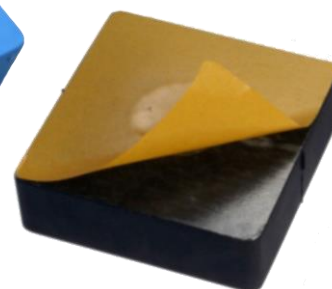
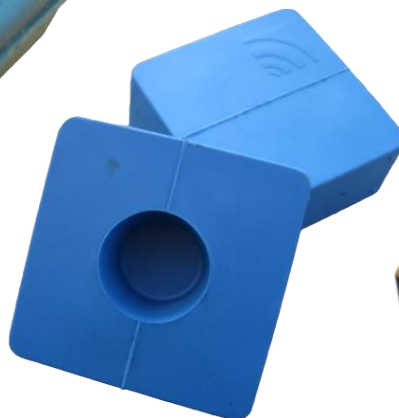
Viscoelastic rubber blocks support very varied ranges of weights. Very easy to install (by gravity or glued) and allows to prevent vibration problems of machinery and installations vibrations. These anti vibration mounts avoid the rigid contact of any dynamic element with surfaces with any structural element.
The 4 basic models of the PA series are

PA 50

PA 70

PA 100

PA 150



Rubber qualities

The 4 basic models of the PA series are manufactured in three standard qualities of rubber..

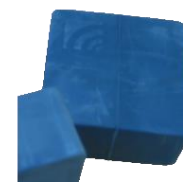
PA50, PA70 y PA100

- Made of natural rubber of black color of hardness 50 ° - 55 ° ShA. Special for placing on supports under heavy loads



PA50 B, PA70 B , PA100 B

- Made of natural rubber blue color and 45 ° ShA dardness. High elasticity , special for medium loads and high insulation.
- The PA 150 are supplied mixed black-blue rubber or quality B.



PA50 S, PA70 S , PA100 S

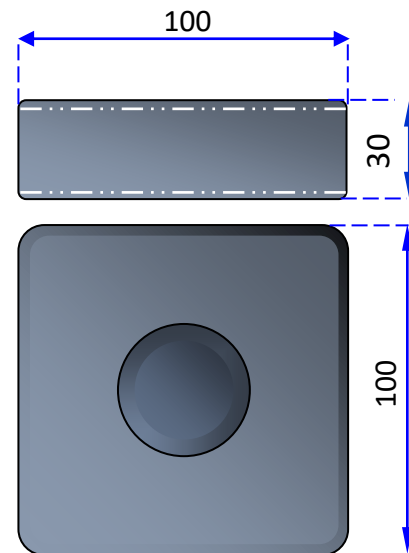
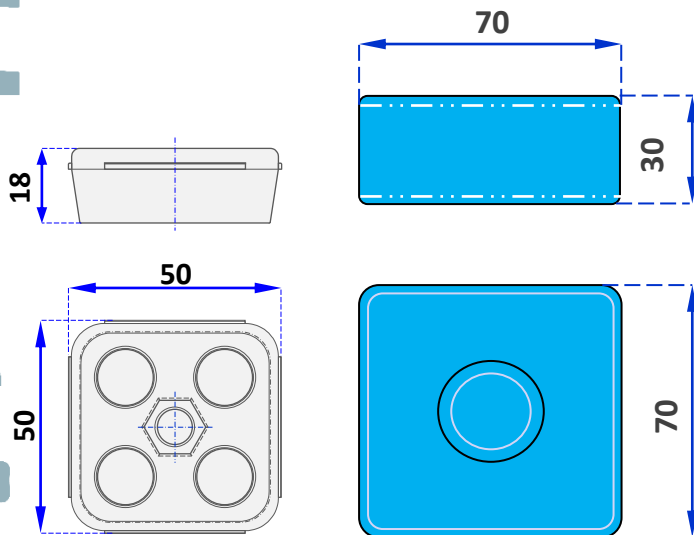
- Made of silicone of different colors. They have a hardness of 35 ° ShA and minor hardnesses. Special for high environmental performance like temperature, chemical attack and food compatibility.



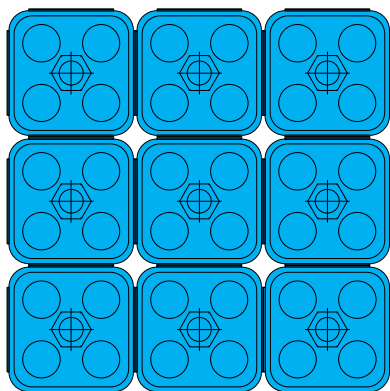
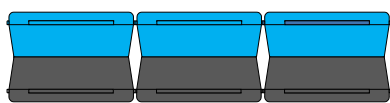


Dimensiones

- The PA50 has a central hexagonal hole designed to fit a DIN 934 M8 nut.
- The PA70 and PA 100 have non-through inner bore which favors further deformation and also allows multiple fixing situations



- The PA150 are composed of 9 PA50 double lugs joined by rubber membranes and adhesive bonding.



- Dimensions of PA 150: 150 x 150 x 36 mm.



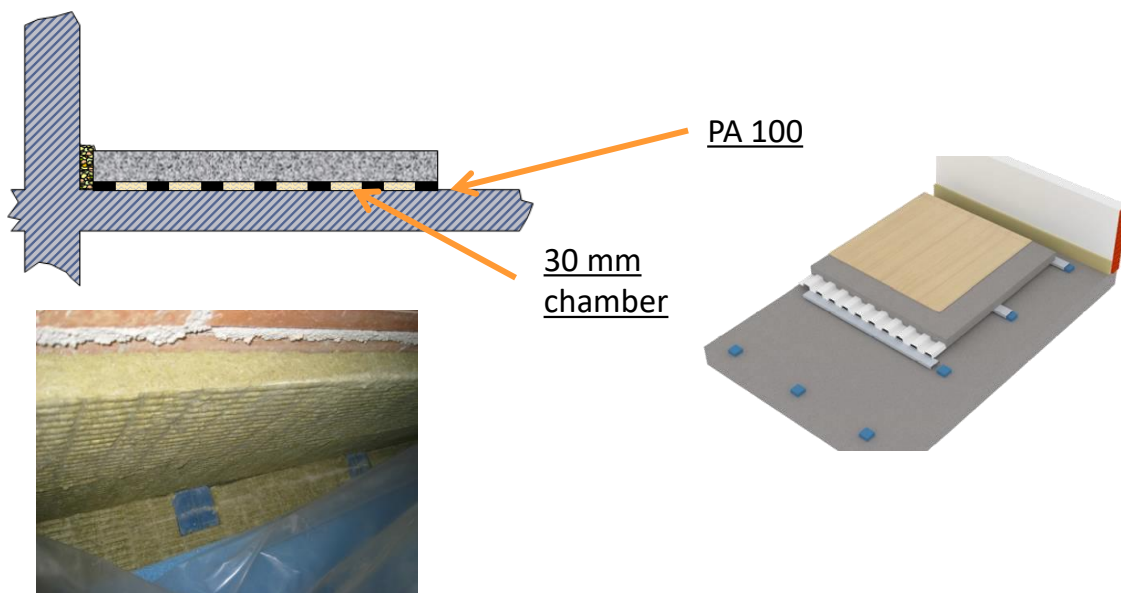
Physical Analysis

Static compression load (axis Z)					
minimun- maximun - optimun					
Model	MINIMUN. [daN]	Deflection [mm]	MAXIMUN. [daN]	Deflection [mm]	OPTIMUN [daN]
PA 50	6	0.5	113	5	15-90
PA 50 B	5	0.5	100	4	10-75
PA 70	20	2.5	400	6	16-320
PA 70 B	10	1	290	7	30-250
PA 100	50	1	750	6	16-500
PA 100 B	50	1	900	6	80-650
PA 150	54	0.5	1012,5	5	135-810
PA 150 B	45	0.5	900	4	90-675



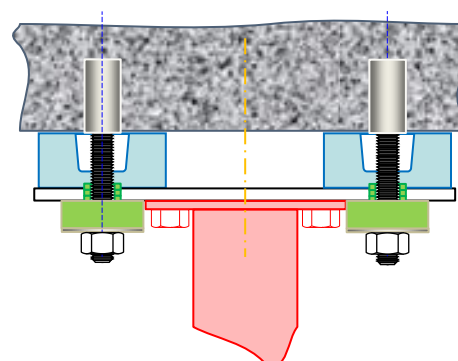
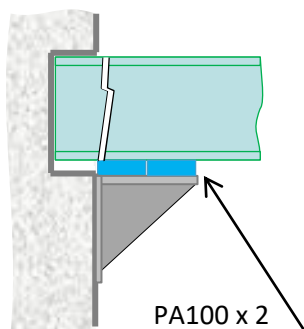
Assembly and applications

It is mainly used in floating concrete discontinuos benches



Dicoupling of beams that transmit vibrations in buildings or structures

Dicoupling vertical fixations struts to the ground



The logo for vibcon features a stylized icon on the left consisting of four white, curved, parallel lines that resemble sound waves or a fan. To the right of this icon, the word "vibcon" is written in a bold, lowercase, white sans-serif font. A registered trademark symbol (®) is positioned at the top right of the word "con".

vibcon[®]

Vibroacústica Control y Aislamiento S.L.